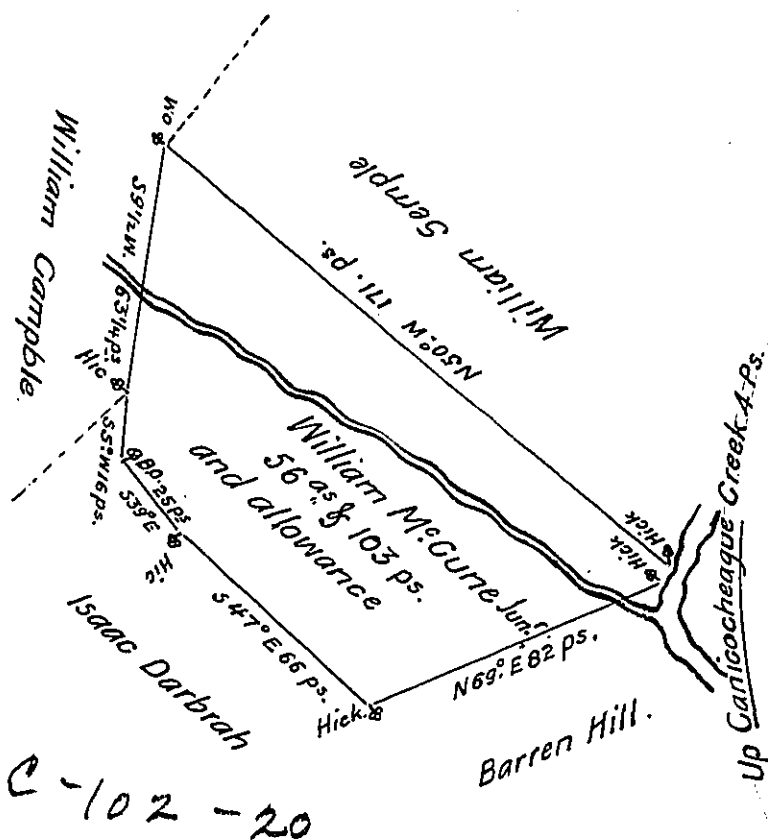


C-154



C-102-20

A Draught of a Tract of Land Situate in Peters Township in the County of Cumberland Containing Fifty six acres and one Hundred and three Perches and the usual allowance of Six $\frac{1}{2}$ Cent for Roads &c Survey'd for William McCune Junr. the 4th Day of May 1767 in Pursuance of an order from the Surveyor General Bearing Date the 26th Day of December 1766 and Numbered 2251.

To *John Lukens Esq^r* }
Surveyor General. }

John Armstrong D.S.

IN TESTIMONY that the above is a copy of the original remaining on file in the Department of Internal Affairs of Pennsylvania, made conformably to an Act of Assembly approved the 16th day of February, 1833, I have hereunto set my Hand and caused the Seal of said Department to be affixed at Harrisburg, this thirteenth day of August 1908

Wesley H. Hoover
 Secretary of Internal Affairs.